

Precautions:

Like any other surgical procedure, care has to be taken to monitor the health condition and the medication, like steroids or anticoagulants taken by the patient, which might affect the surgical procedure. Proper caution has to be taken when using in pregnant women and children as patients. Healiguide is available by medical prescription only.

Sterilization Method:

The Healiguide membrane is sterilized by ethylene oxide gas.

Storage: Healiguide should be kept in a clean, dry location. It can be stored at ambient room temperature and it is risk-free between -18°C to 40°C or 0°F to 104°F.

Shelf Life: Healiguide Shelf life is 3 years.

Advantages:

- Better than ePTFE(PolyTetraFluoroEthylene) barrier membranes due to its resorbable nature.
- Superior to other collagen membranes because of high purity and better biocompatibility.
- The bone "graft" provides support for the membrane.
- The bone "graft" facilitates clot stabilization.
- The membrane guides favorable healing.

Sizes Available:

(Each box containing 1 Vial)

15x20 mm per Vial

20x30 mm per Vial

30x40 mm per Vial

Manufactured & Marketed by:

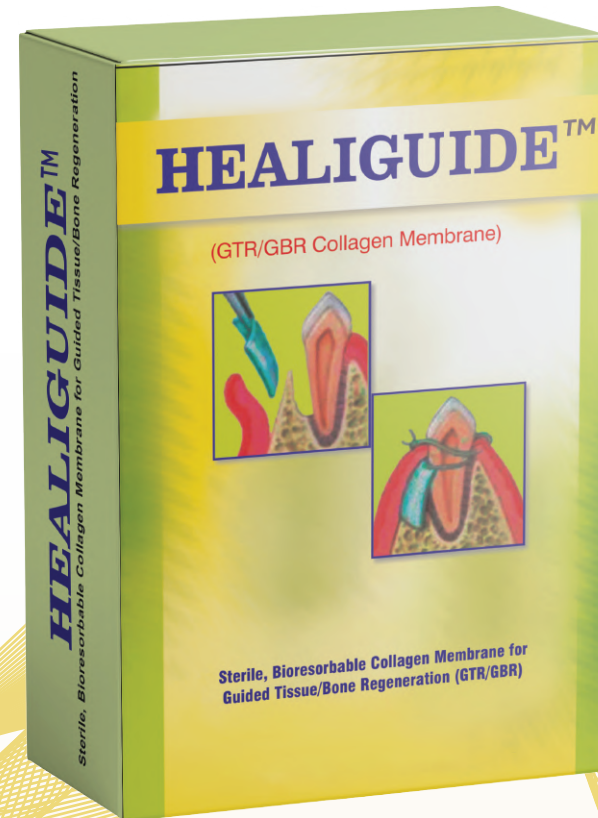
ENCOLL
Enhancing life through collagen

Address: 4576 Enterprise St. Fremont, CA 94538 USA
Tel: (510) 659-1466, Email: info@helicoll.com

CP0404.A

HEALIGUIDE™

Absorbable Collagen Membrane



Bioresorbable, implantable material for guided tissue regeneration of bone damages.

ENCOLL
Enhancing life through collagen

HEALIGUIDE™

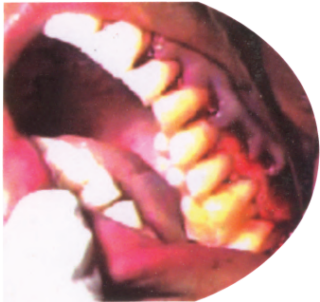
DESCRIPTION

Healiguide is a thin sheet made of high purity Type-I collagen derived from selected animal tissues and purified using a patented American technology. The additional charge modifications and slight calcification of collagen helps for proper guided bone tissue regeneration.

Healiguide is unique and different from other native collagen membranes that are known to facilitate fibrogenesis over osteoconduction. Its complete resorbability eliminates any need for a second surgical procedure as in the case of a non-resorbable membrane.

INSTRUCTIONS FOR USE

Healiguide is a bioresorbable, implantable material that is indicated for guided tissue regeneration procedures in periodontal defects to enhance regeneration of the periodontal damages.



PREPARATION OF USE

Following the opening of the vial in a clean and sterile environment, take out the sterile Healiguide membrane. Soak the sterile membrane in sterile water for approximately 1 min. Following soaking, the membrane becomes pliable and may be cut to shape to use for the surgery. It can be easily sutured with 3-O suture.

POST OPERATIVE CARE

Healiguide is totally resorbable and should not be removed unless any complication arises due to infection or other reasons. Periodontal packing may be applied to the wound site, if preferred by the Clinician. Care must be taken not to over compress the area. Patients should rinse with an appropriate antimicrobial agent of the Clinician's choice (like chlorhexidine gluconate) twice daily for 2 weeks following the application of the membrane. The wound site may additionally be swabbed with a cotton tipped applicator dipped in appropriate antimicrobial solution.

THE PATIENT SHOULD AVOID

Brushing the treated area for 2 weeks from the surgery date

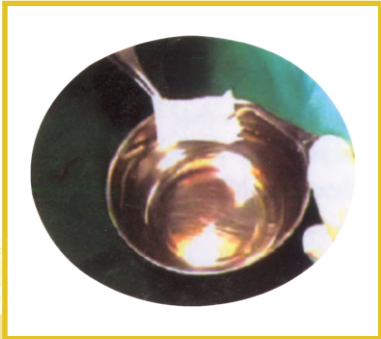
Flossing for 4 weeks from the surgery date

Following the first 2 weeks from surgery, for the next 3 weeks, it is recommended to brush the area ONLY with a soft brush

Coronal scaling and preventive maintenance can be performed at follow-up visits, if needed.

Post operative evaluations to monitor the wound healing rate or for the removal of any closing sutures or periodontal packing should be done one week following surgery. Thereafter, routine follow-up visits have to be made at bi-weekly intervals for up to a total of 2 months from the surgery. Then the patient may undertake routine normal oral care procedures.

Until the completion of 8 weeks following surgery, probing and sub-gingival scaling should be avoided to prevent possible damage to the immature regenerating tissues underneath. However the other clinical assessments for normal health, like monitoring the bleeding, plaque formation and the tooth mobility indices can be made as usual.



CONTRAINDICATION

- A. Healiguide is contraindicated in infectious and contaminated cases of oral cavity.
- B. Healiguide is contraindicated for highly sensitive patients for collagen materials.
- C. Healiguide is contraindicated in clinical situations where periodontal surgery should not be performed.

WARNINGS

It is the responsibility of the Clinician to instruct the patient on the precautions. One has to see the Clinician immediately upon abnormal symptoms like severe pain, infection, sepsis, edema, intensive haemorrhage, etc.